

# TRUE TRACK

Applied CNC - MH  
(800) 752-7502

1 - Remove the 4 nuts from the Rear Spindle bolts

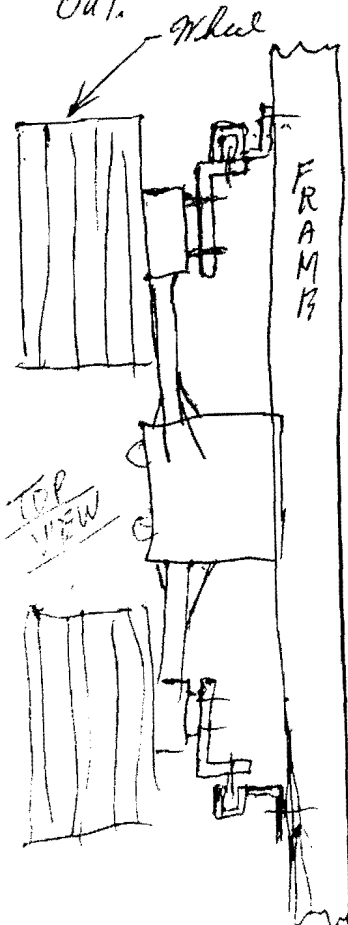
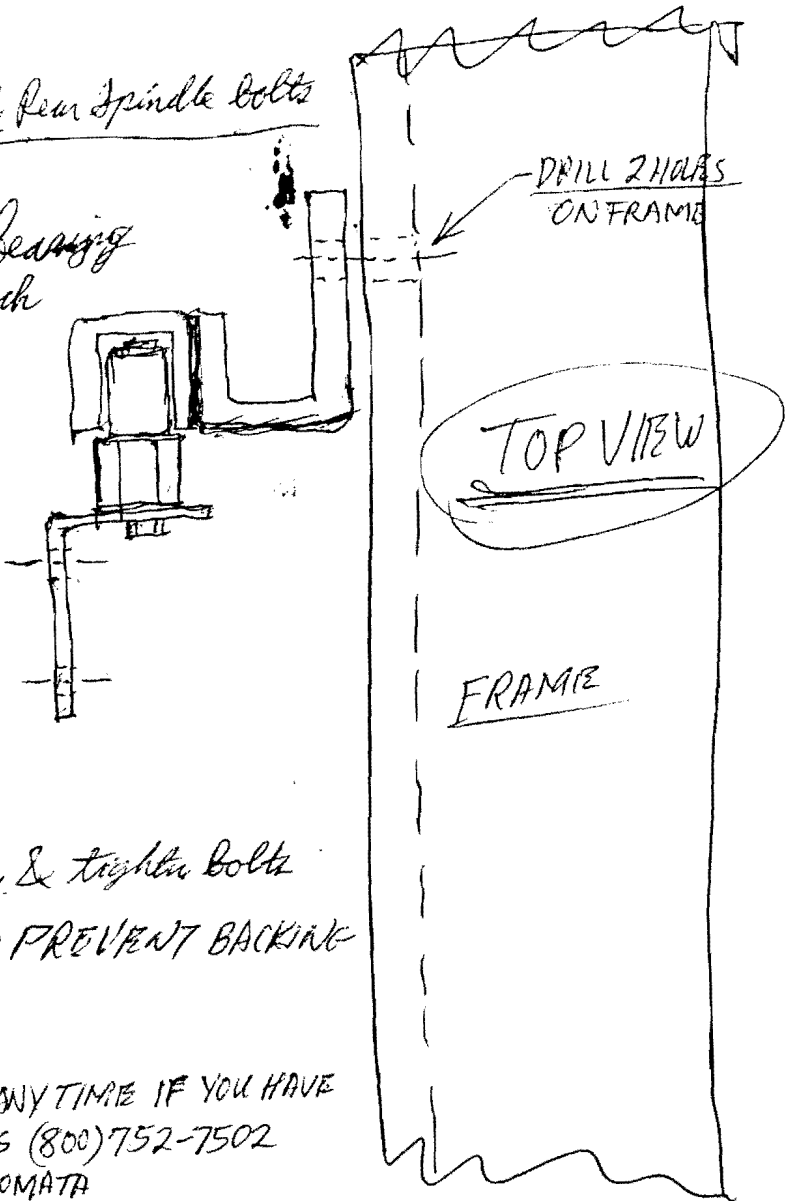
2 - Mount the angle w/ the bearing using the longer bolts on back

3 - Place the welded angles against the frame & mark holes to be drilled

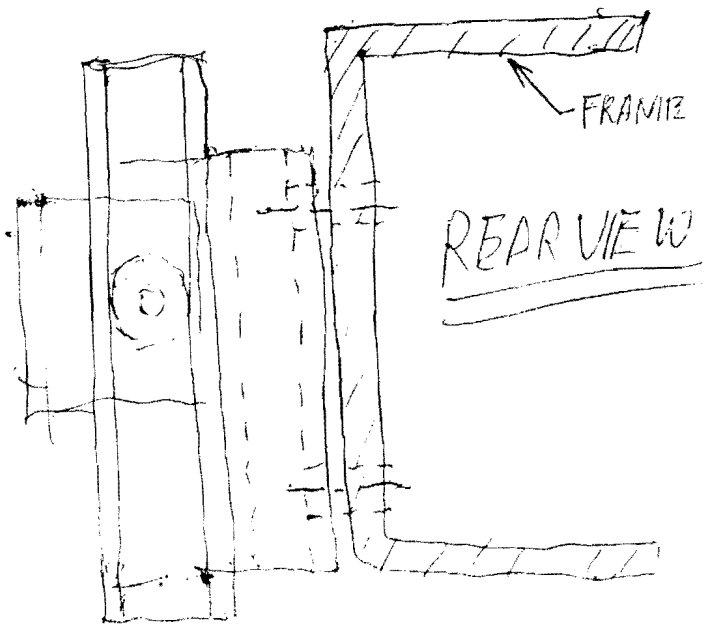
4 - Bolt on the welded angle

5 - Adjust the large concentric nut so the bearing slides up & down without restriction & tighten bolts

6 - US LOCK-TITE ON BOLTS TO PREVENT BACKING OUT.

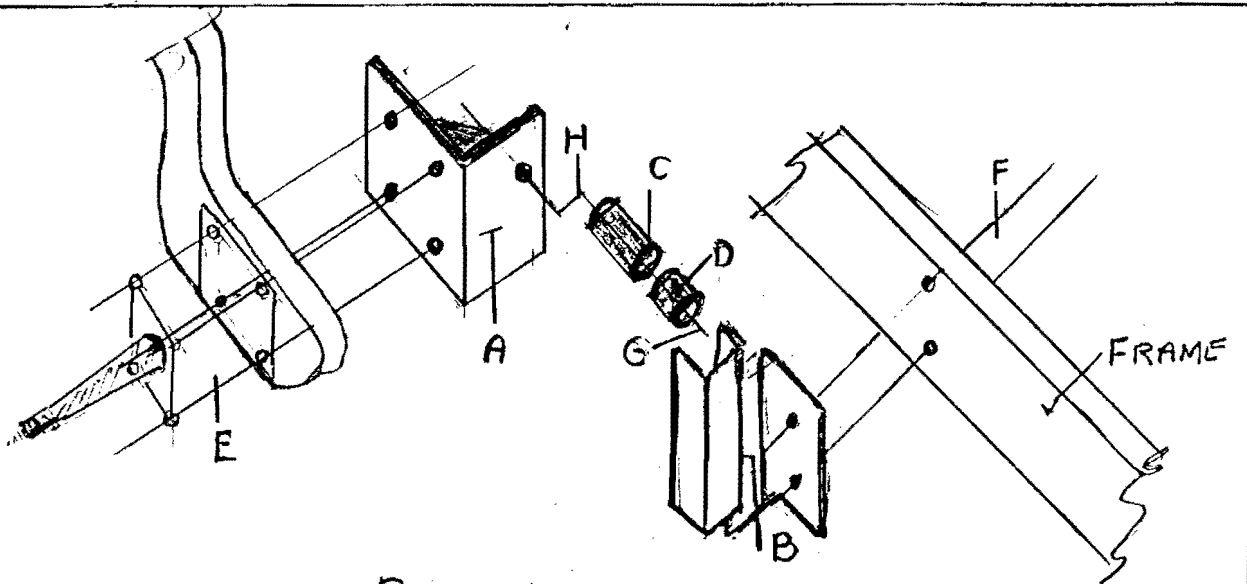


- CALL ME ANYTIME IF YOU HAVE QUESTIONS (800) 752-7502  
JIM KANOMATA

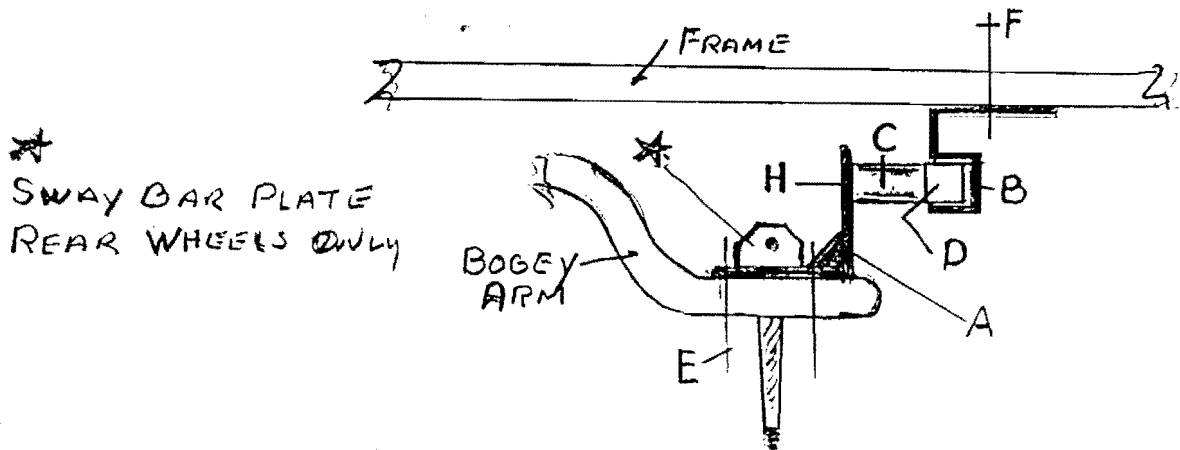


Parts list

- A 4 ea. Angle Plates
  - B 4 ea. Rail Brackets
  - C 4 ea. Cams
  - D 4 ea. Cam Followers (Bearing)
  - E 16 ea. Bolts 3/8"X 3-1/2" Use existing nuts
  - F 8 ea. Bolts 7/16"X 1-1/2" W/Nuts
  - G 4 ea. Bolt 7/16"X 1-3/4" (Cam to Cam Followers)
  - H 4 ea. Bolt 7/16"X 1" (Cam to Angle Plate)
- \* All bolts "grade 8"



PARTS VIEW



TOP VIEW

FIGURE # 1

Jack up the rear wheels of the coach and secure on jack stands for your safety.

Remove the wheels and tires. Remove brake drums. Deflate air bags. Install angle plate with cam hole in the top portion of angle plate. Remove 3 of the 4 bolts to the backing plate leaving upper left bolt in place, ( so backing plate and shims can't move) so as to clear remaining bolt. Replace with new bolt, remove upper left bolt and rotate angle plate so all holes line-up, install the remaining three new bolts using the existing nuts. ( on the front bogeys this bracket will extend to the front with the end pointing toward the frame. On the rear bogeys, the angle on the bracket will extend to the rear with the angle pointing towards the frame.) The extra plate attached to two of the bracket is to mount the rear sway bar, these brackets go on the rear bogey's.  
(See figure #1)

Mount the adjusters and the cam followers using the bolts furnished. (use "Lock Tight" on bolt cam to cam follower), On the front bogeys the adjusters mount to the forward (front) side of the angle bracket. On the rear bogeys, they mount on the back side of the angle bracket (to rear).

Raise the control arm until the air bag mounting bracket is vertical. This position should represent ride height position. Now position the rail bracket over the roller with the adjuster lock bolt loose. Place rail bracket against the frame with the top and bottom of the bracket even with the frame. The 1 3/4" long end of the rail portion will extend up. The cam follower and portion of cam will extend into the rail leaving 1/4" clearance to the back of the rail. Locate the mounting bolts position by marking the frame through the rail bracket holes. Drill 7/16 " holes and secure rails to frame, with 1 1/2" bolts. (bolts and nuts furnished.) Caution check inside of frame for gas lines, wires or brake lines before drilling

Re-check all mounting bolts. Now check for proper clearance of cam follower mounting bolt heads (clearance 1/4"). Now adjust the cam to a neutral position, tighten bolt. (use "Lock Tight" on bolt). (Neutral position -0- clearance on both sides of roller in the rail no pressure.) Relocate emergency brake cable brackets (lower 1 1/2") so the alignment lock brackets do not rub the brake cable. To do this a new holes will be drilled to lower cable.

Reinstall drums, wheels and tires. Inflate air bags as you lower the coach.