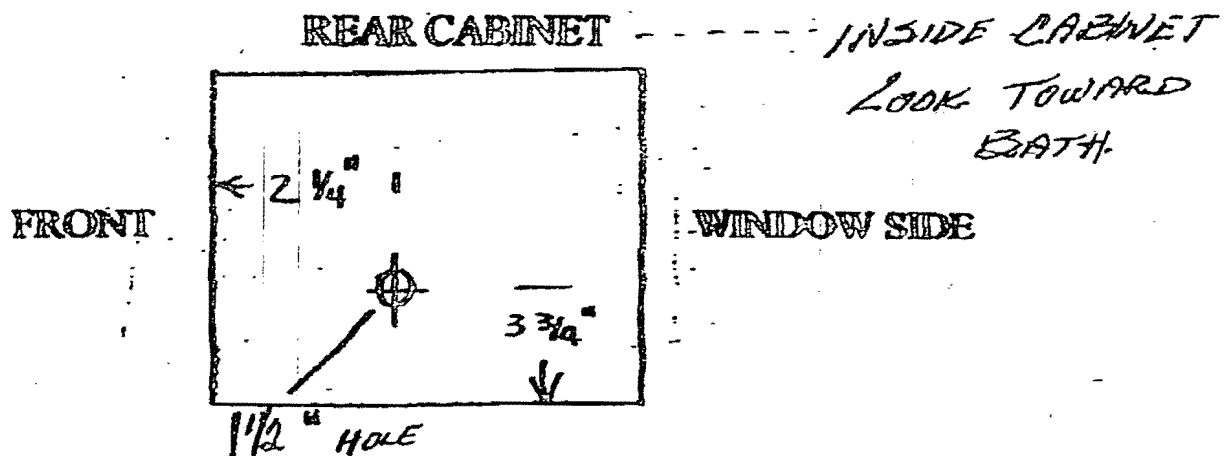
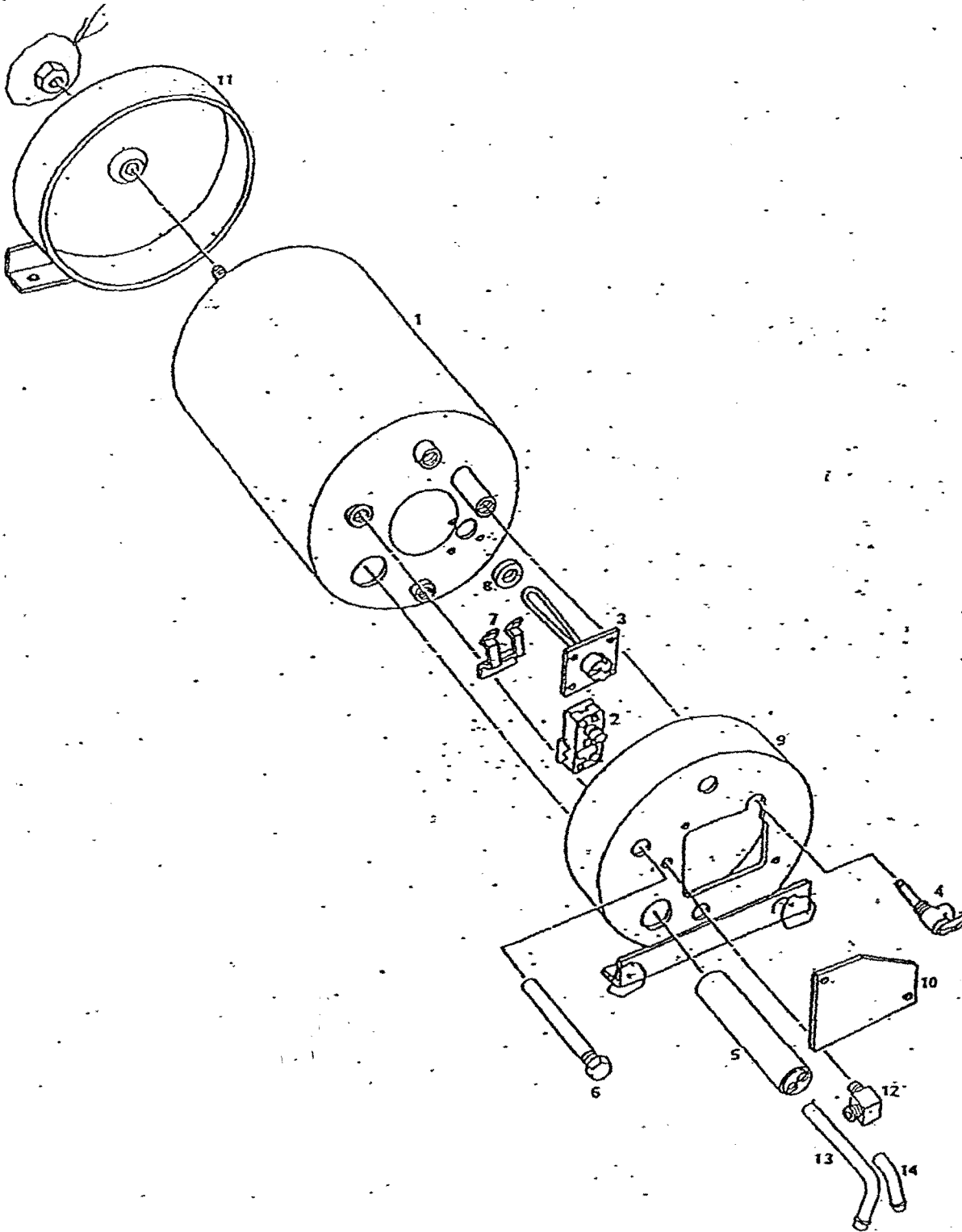


APPLIED AIR/GMC
47626 KATO RD.
FREMONT, CA 94538-7305

RE: STAINLESS STEEL HOT WATER TANK
2ND DESIGN

- A) USE 1 1/2" X 3" BRASS NIPPLES FOR HOT AND COLD WATER INLETS.
(SUPPLIED)
- B) BRASS COUPLING FOR PRESSURE RELIEF. (SUPPLIED AND INSTALLED)
- C) FOR TANK REMOVAL, DRILL HOLE IN REAR CABINET AND BATHROOM WALL WITH 1 1/2" HOLE SAW. USE 9/16 SOCKET TO REMOVE NUT FROM REAR OF TANK.
- D) CXC 10642-07 120 VOLT 1000 WATT HEAT ELEMENT AND O-RING.
(SUPPLIED AND INSTALLED)
- E) TEFLON #567 PIPE SEALANT (LOCTITE) ... WORKS WELL.

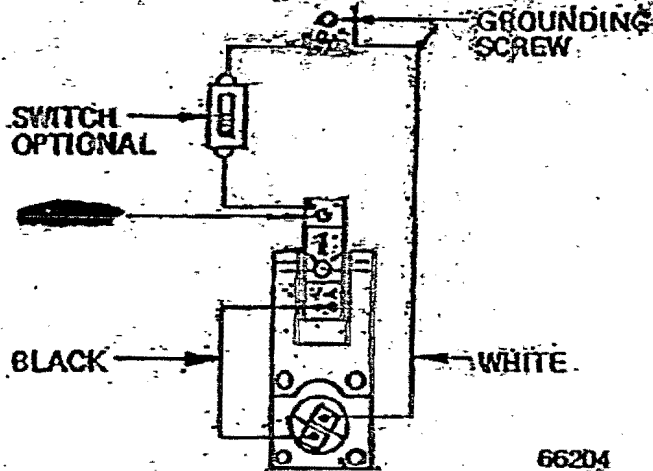




28.034J HEATER - WATER (SECOND DESIGN)
28-34

Z8P-43-177

**WIRING DIAGRAM 118V AC
ROBERTSHAW THERMOSTAT ONLY**



66204

DISCONNECT POWER SUPPLY BEFORE REMOVING COVER